



Sierra Components, Inc.

2222 Park Place, 3-E • Minden, Nevada 89423

Phone: 775.783.4940 Fax: 775.783.4947

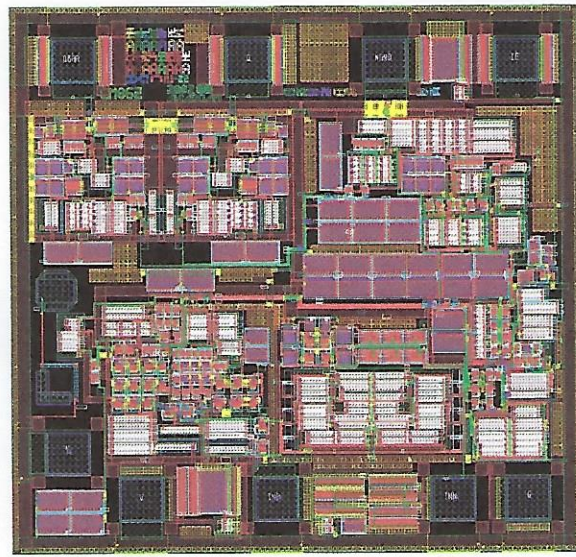
MAX913

QB

Q

GND

LE



60 mils/1.524mm with scribe
55 mils / 1.397mm without scribe

VCC

61 mils/1.549mm with scribe
56 mils/1.422mm without scribe

V+

IN+

IN-

V-

APPROVED BY: MG

DIE SIZE: 56 x 55

DATE: 12/10/18

MFG: MAXIM

THICKNESS:

P/N: MAX913C/D

DG 10.1.2
Rev A 3-4-99